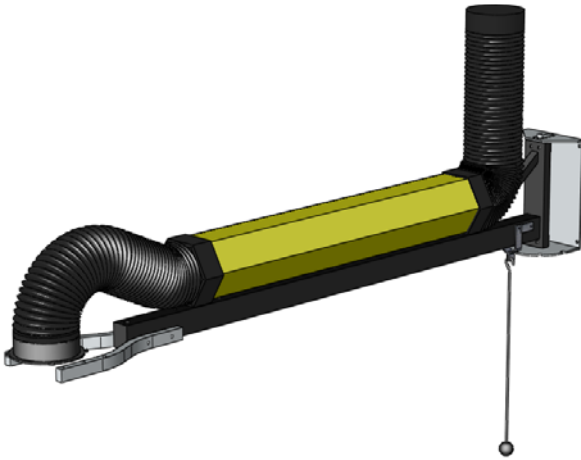


Extension Crane



Description

The NEC 2 is a wall-mounted extension crane. It is used to extend the reach of an extraction arm to cover very large and/or multiple work areas. The NEC 2 is provided with the *HandyStop* system to lock the base in the desired position (5 possibilities).

Applications

The NEC 2 is intended to be used for the following applications:

- MIG-MAG/GMAW welding
- TIG welding
- FCAW welding
- stick/MMAW welding





Do **not** use the NEC 2 for the following applications or in the following circumstances:

- arc-air gouging
- extraction of aggressive fumes and gases (e.g. from acids, from alkaline, from soldering paste containing lithium)
- extraction of hot gases (more than 45°C/113°F continuously)
- grinding aluminum and magnesium
- flame spraying
- extraction of cement, saw dust, wood dust etc.
- sucking cigarettes, cigars, oiled tissues and other burning particles, objects and acids
- explosive environments or explosive substances/gases



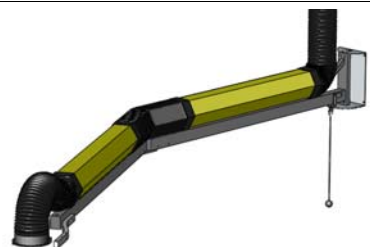
Specifications

Physical dimensions and properties	
Length	2 m (6.5 ft)
Diameter	203 mm (8 in.)
Material:	
- Tubes	- polypropylene copolymere with UV stabilization
- Hoses	- PVC with metal springs
- Base	- steel
- Wall bracket	- galvanized steel
Max. temperature (continuously):	
- Tubes	- 80°C (176°F)
- Hoses	- 80°C (176°F)

Colour:	
- Tubes	- yellow RAL 1028
- Hoses	- grey RAL 7024
- Base	- black RAL 9005
Max. load	50 kg (110 lbs)
Weight (net)	37,8 kg (83.3 lbs)
• Ambient conditions	
Min. operating temperature	5 °C (41 °F)
Nom. operating temperature	20 °C (68 °F)
Max. operating temperature	45 °C (113 °F)
Max. relative humidity	80%
Outdoor use allowed	no
Storage conditions	- 5-45 °C (41-113 °F) - relative humidity max. 80%
• Product combinations	
EXT NEC 4	extension 2 m (6.5 ft)
Flex 3/4, UltraFlex 3/4 ^{*)}	extraction arm
• Available options	
RS 2	hanging suspension for wire feeder (max. 50 kg)
• Scope of supply	
Extension crane on base, incl. wall mounting bracket - HandyStop rod - Hose 115 cm (3) - Bush (4) - Hose clamp (2) - Sticker 'max. 50 kg' - Hardware	
• Order information	
Article number	7920122000
Number/package	1
• Shipping data	
Gross weight	42,2 kg (93 lbs)
Packing dimensions	
Max. number/pallet	8
Harmonized Tariff Code	84213920
Country of origin	the Netherlands
• Approvals/certificates	
	
	EU Directive 2002/95/EC (RoHS) (valid as of July 2006)

^{*)} Refer to separate Product Data Sheet(s)

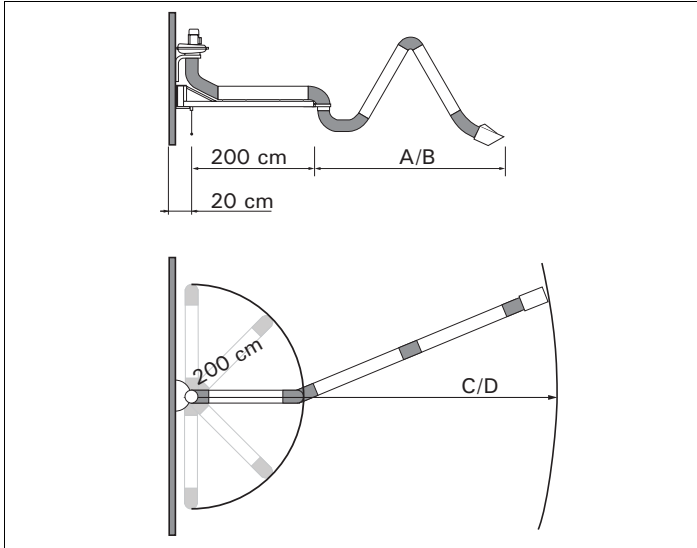
Features

NEC 2 + extension EXT NEC 4	
--------------------------------	---

HandyStop

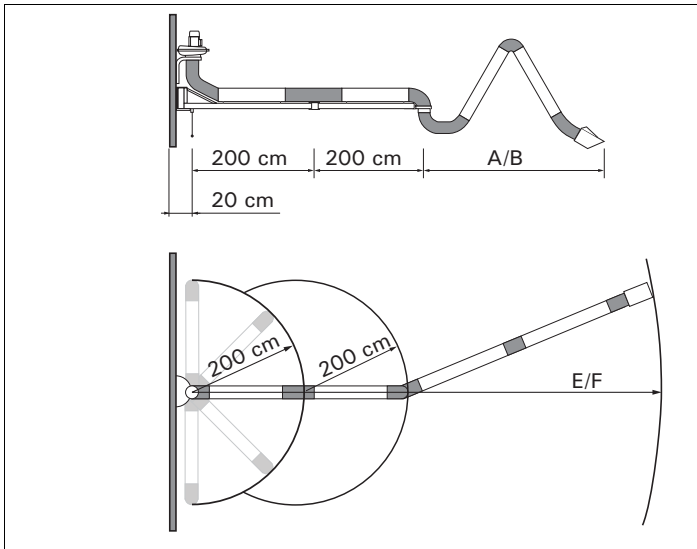


Reach



NEC 2 + extraction arm

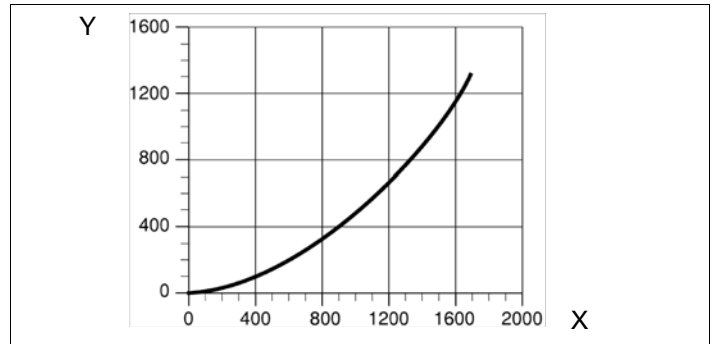
- A = (Ultra)Flex 3 = max. 330 cm (10.8 ft)
- B = (Ultra)Flex 4 = max. 430 cm (14.1 ft)
- C = NEC 2 + (Ultra)Flex 3 = max. 530 cm (17.4 ft)
- D = NEC 2 + (Ultra)Flex 4 = max. 630 cm (20.7 ft)



NEC 2 + EXT NEC 4 + extraction arm

- A = (Ultra)Flex 3 = max. 330 cm (10.8 ft)
- B = (Ultra)Flex 4 = max. 430 cm (14.1 ft)
- E = NEC 2 + EXT NEC 4 + (Ultra)Flex 3 = max. 730 cm (23.9 ft)
- F = NEC 2 + EXT NEC 4 + (Ultra)Flex 4 = max. 830 cm (27.2 ft)

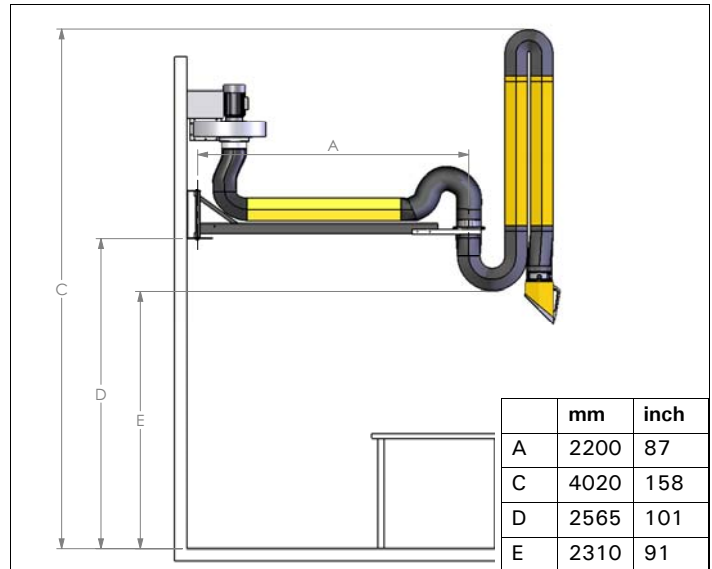
Pressure drop



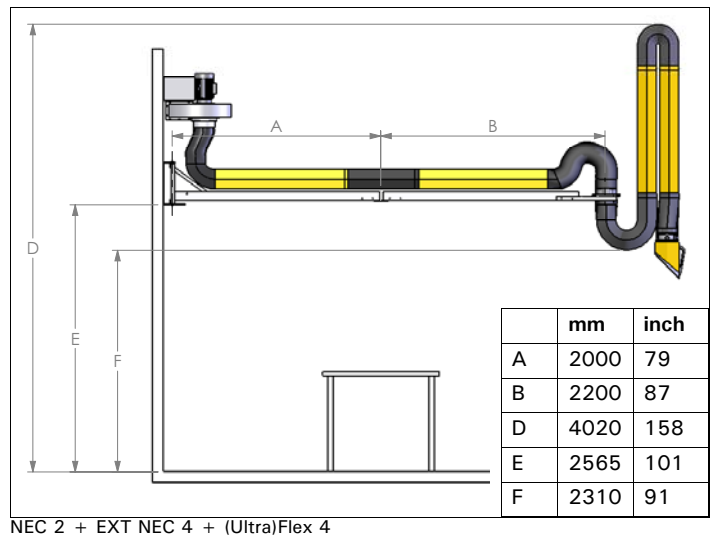
NEC 2 (+ EXT NEC 4) + (Ultra)Flex 3/4

- X = Airflow (m³/h)
- Y = Static pressure (Pa)

Mounting measurements



NEC 2 + (Ultra)Flex 4



NEC 2 + EXT NEC 4 + (Ultra)Flex 4

Product type : NEC 2
 Art. no. : 7920122000
 Product category : extraction arms/hoses
 Version : 010807/0

Euromate BV
 P.O. Box 9350
 1800 GJ Alkmaar
 The Netherlands
 www.euromate.com

